

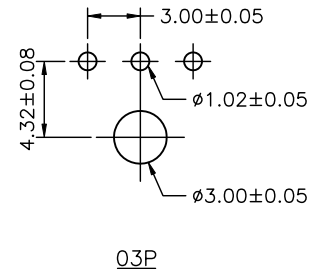
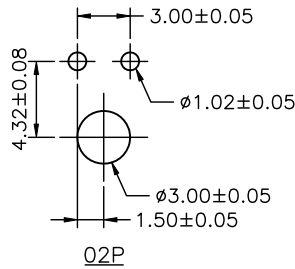
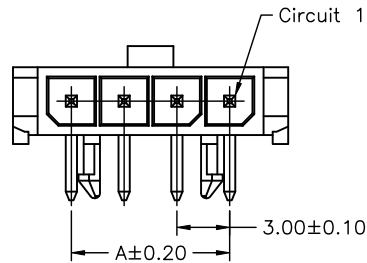
P/N LEGEND

2WBC3030	WR-F-XP	N L B	T1 N 00 B
①	②	③	④
⑤	⑥	⑦	⑧
⑨	⑩	⑪	

① Series No.
 ② Connector type: WR=Right angle
 ③ F=With boss or peg
 ④ No. of circuits
 ⑤ N=Halogen Free
 ⑥ Material: L=LCP,UL94V-0
 ⑦ Color: B=Black
 ⑧ Plating code: T1=Matte Tin-plated
 ⑨ Plating code: N=Non-plating
 ⑩ Option code: 00=Standard
 ⑪ Packing code: B=Tray

SPECIFICATIONS

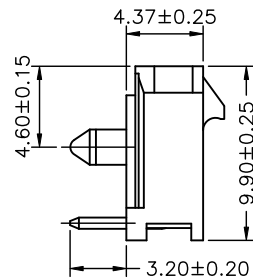
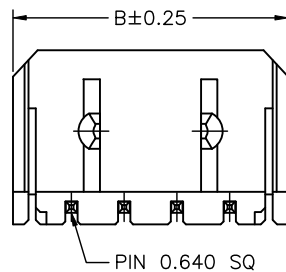
Current Rating: 5A AC,DC
 Voltage Rating: 250V AC,DC
 Temperature Range: -25°C ~ +85°C
 Contact Resistance: 10mΩ Max
 Insulation Resistance: 1000MΩ Min
 Withstanding Voltage: 1500V AC/minute
 Pin Material: Brass/Tin-plated



P.C.B. LAYOUT

Ordering Information & Dimensions

PART NO.	Dimensions	
	A	B
02P	3.00	9.65
03P	6.00	12.65
04P	9.00	15.65
05P	12.00	18.65
06P	15.00	21.65
07P	18.00	24.65
08P	21.00	27.65
09P	24.00	30.65
10P	27.00	33.65
11P	30.00	36.65
12P	33.00	39.65

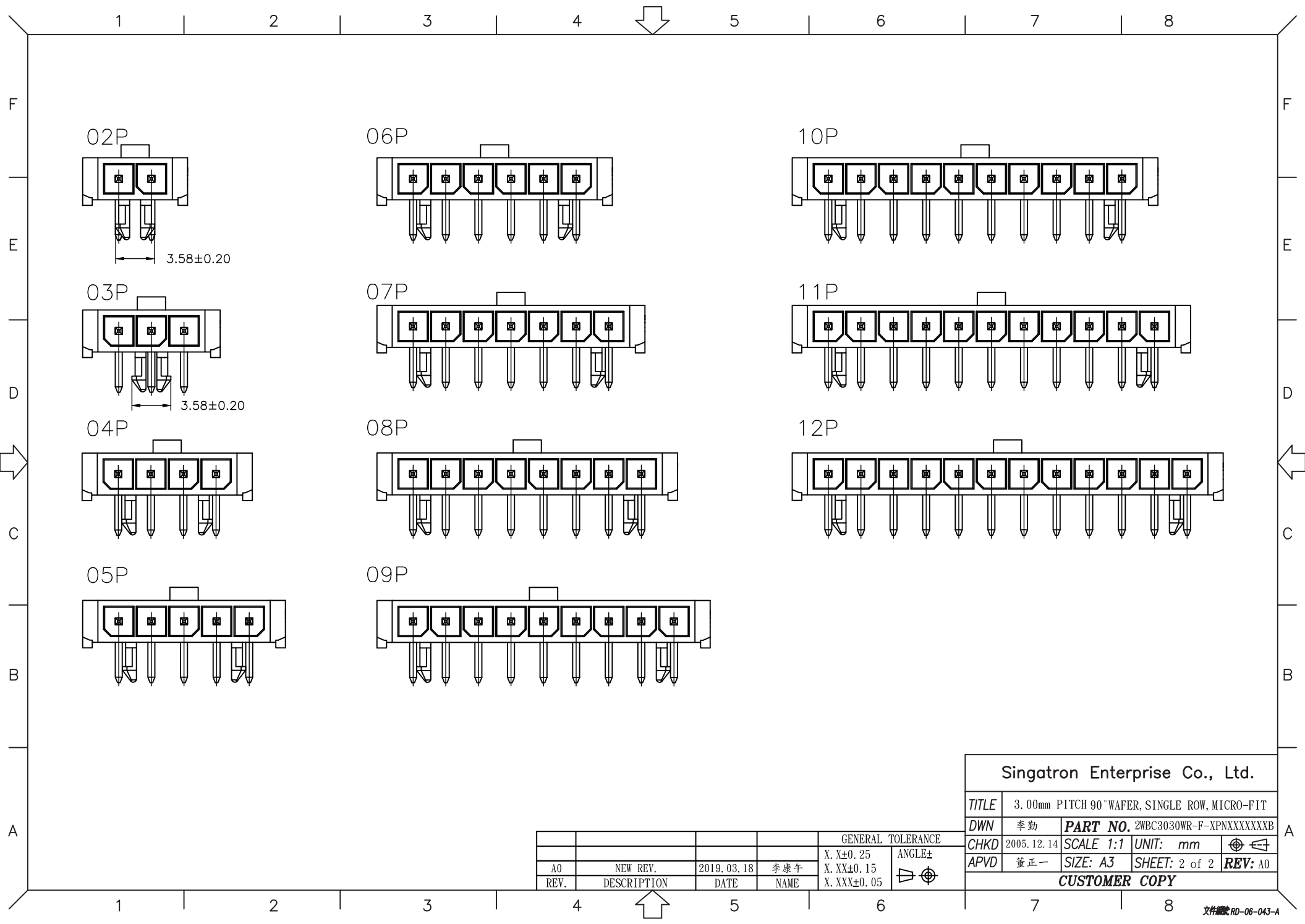


Singatron Enterprise Co., Ltd.

TITLE	3.00mm PITCH 90° WAFER, SINGLE ROW, MICRO-FIT		
DWN	李勤	PART NO.	2WBC3030WR-F-XPXXXXXXXXXB
CHKD	2005.12.14	SCALE	1:1 UNIT: mm
APVD	董正一	SIZE	A3 SHEET: 1 of 2 REV: A0

CUSTOMER COPY

REV.	DESCRIPTION	DATE	NAME	GENERAL TOLERANCE	ANGLE±
A0	NEW REV.	2019.03.18	李康午	X.X±0.25	▽
				X.XX±0.15	▽
				X.XXX±0.05	▽



Singatron Enterprise Co., Ltd.			
TITLE	3.00mm PITCH 90° WAFER, SINGLE ROW, MICRO-FIT		
DWN	李勤	PART NO.	2WBC3030WR-F-XPNXXXXXXXXB
CHKD	2005.12.14	SCALE	1:1
APVD	董正一	UNIT:	mm
		SIZE:	A3
		SHEET:	2 of 2
		REV:	A0
CUSTOMER COPY			

				GENERAL TOLERANCE	
				X. XX±0.15	ANGLE±
A0	NEW REV.	2019.03.18	李康午	X. XX±0.15	⊕
REV.	DESCRIPTION	DATE	NAME	X. XXX±0.05	