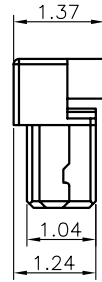
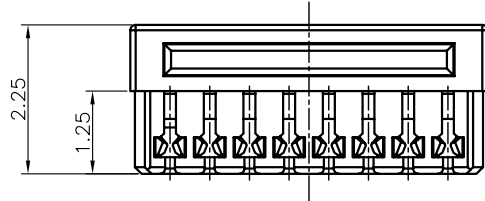
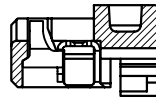
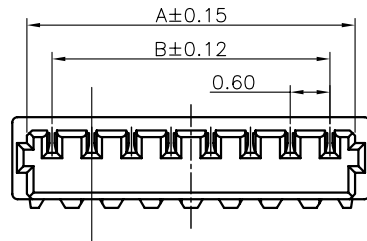


1 2 3 4 5 6 7 8

F



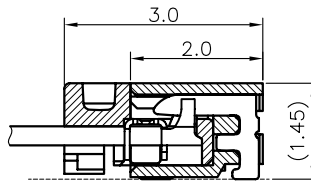
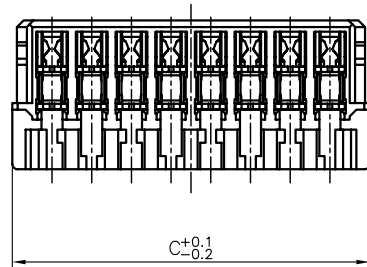
E



D

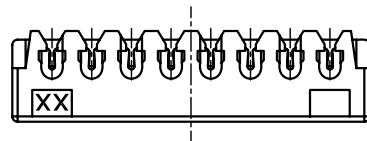
SECTION A-A

C



Assembly Layout

B



A

- SPECIFICATIONS
 - Current Rating : 0.2A AC/DC
 - Withstanding Voltage : 200V AC/minute
 - Insulation Resistance : 100MΩ min.
 - Temperature Range : - 25°C to + 85°C
 - Contact Resistance : 30mΩ max.

■ IDC HOUSING

- Part No. : 2WBID0600-XX(XX)-XX

Product Code ① ② ③

- ① Poles No: 02~30
- ② Blank : Normal
NH : Non-Halogen
- ③ Blank : Tin Plated
NM : Matte Tin
G : Gold Plated

- Material : Base : LCP.UL94V-0
Contact : Copper Alloy, Tin Plated
- Q'ty : 1,000 pcs./Bag
- Mate With : 2WBID0601X-XX Series
- Applicable Wire : Conductor Size : AWG #36

POLES	A	B	C	POLES	A	B	C
02	1.36	0.60	1.80	17	10.36	9.60	10.80
03	1.96	1.20	2.40	18	10.96	10.20	11.40
04	2.56	1.80	3.00	19	11.56	10.80	12.00
05	3.16	2.40	3.60	20	12.16	11.40	12.60
06	3.76	3.00	4.20	21	12.76	12.00	13.20
07	4.36	3.60	4.80	22	13.36	12.60	13.80
08	4.96	4.20	5.40	23	13.96	13.20	14.40
09	5.56	4.80	6.00	24	14.56	13.80	15.00
10	6.16	5.40	6.60	25	15.16	14.40	15.60
11	6.76	6.00	7.20	26	15.76	15.00	16.20
12	7.36	6.60	7.80	27	16.36	15.60	16.80
13	7.96	7.20	8.40	28	16.96	16.20	17.40
14	8.56	7.80	9.00	29	17.56	16.80	18.00
15	9.16	8.40	9.60	30	18.16	17.40	18.60
16	9.76	9.00	10.20				

TOLERANCE	
.0	±0.30
.00	±0.20
.000	±0.10
ANGLE	
0°	±1°
.0°	±
SHEET	1/1

Singatron Enterprise Co., Ltd.

TITLE	0.6mm Pitch Wire to Board Conn. Socket		
DWN	張逸維	PART NO.	2WBID0600-XX(XX)-XX
CHKD	黃科源	SCALE 1:1	UNIT: mm
APVD	張育瑞	SIZE: A3	SHEET: 1 OF 1

CUSTOMER COPY

2012/11/01

1 2 3 4 5 6 7 8