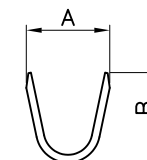
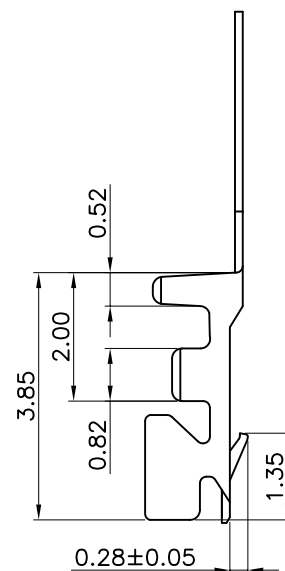
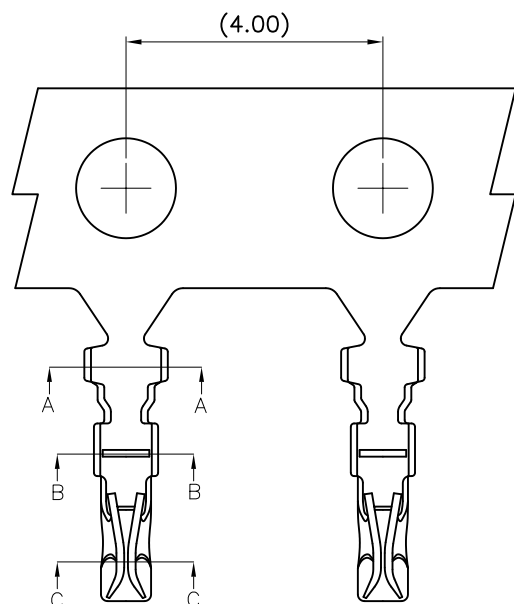
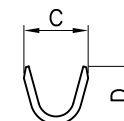


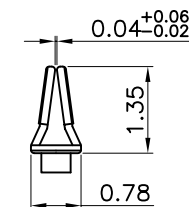
REV	ECN NO.	DESCRIPTION	DATE	APP'D
C/2	N/A	AMEND TOLERANCE	05/13/14*	Paul
C/3	N/A	ADD FINISH(P*)	03/09/17*	Paul
C/4	N/A	AMEND TOLERANCE	05/10/17*	Paul



Section A-A



Section B-B



Section C-C

# NOTES:

- MATERIAL: PHOSPHOR BRONZE,  $t=0.12\text{mm}$
- FINISH:
  - A--TIN-PLATED OVER NICKEL
  - AE--PRESSING BEFORE TIN-PLATED OVER NICKEL
  - GO--GOLD FLASH ON CONTACT AREA OUTSIDE, OVER NICKEL
  - G\*--\*u"min. GOLD PLATED ON CONTACT AREA OUTSIDE, OVER NICKEL
  - P\*--\*u"min. GOLD PLATED ON CONTACT AREA INSIDE, OVER NICKEL
- APPLICABLE WIRE RANGE: SEE CONTACT INFORMATION
- INSULATION O.D.: SEE CONTACT INFORMATION
- USE WITH: 2WB1001 SERIES HOUSING
- ORDERING CODE: 2WT1001TP\*-\*-\*
  - O: STANDARD
  - L: LOW CRIMP HEIGHT
  - H: HIGH CRIMP HEIGHT
  - DL: SPECIALLY LOW CRIMP HEIGHT
  - FINISH SEE NOTE 2

# CONTACT INFORMATION:

Part No.	Wire Range	Insulation O.D.	DIM.(mm)			
			A	B	C	D
2WT1001TPH-*	AWG#26~#28	$\varnothing 0.80\sim 0.90\text{mm}$	1.40	1.70	1.10	1.10
2WT1001TPO-*	AWG#28~#32	$\varnothing 0.40\sim 0.80\text{mm}$	1.30	1.40	1.00	0.90
2WT1001TPL-*	AWG#32~#34	$\varnothing 0.30\sim 0.40\text{mm}$	1.10	1.00	1.00	0.90
2WT1001TPL-*DL	AWG#36	$\varnothing 0.20\sim 0.30\text{mm}$	1.05	1.15	0.85	0.65

TOLERANCE  
 X.X  $\pm 0.25$   
 X.XX  $\pm 0.15$   
 ANGULA 3'  
 UNLESS OTHERWISE SPECIFIED

Singatron Enterprise Co., Ltd.

TITLE	WIRE TO BOARD, RECEPTACLE, PITCH 1.00mm, CRIMP TYPE, CONTACT			
DWN Bong Wang	PART NO.	2WT1001TPx-x-x		
CHKD Carter Shih	SCALE 1:1	UNIT: mm		
APVD Paul Chen	SIZE: A3	SHEET 1 OF 2	REV: C/4	

CUSTOMER COPY

