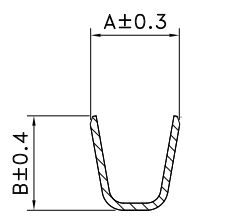


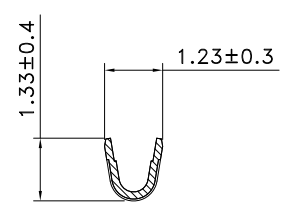
- SPECIFICATIONS**
- Voltage Rating : 125V AC/DC
  - Current Rating : 22AWG 2.0A AC/DC  
24AWG 2.0A AC/DC  
26AWG 1.5A AC/DC  
28AWG 1.0A AC/DC  
30AWG 0.5A AC/DC
  - Withstanding Voltage : 1,000V AC/minute
  - Insulation Resistance : 1,000MΩ min.
  - Temperature Range : - 25°C to + 105°C
  - Contact Resistance : 20mΩ max.

- TERMINAL**
- Part No. : 2WT2002H-T X X  
① ②
  - ① Material :  
Blank : Phosphor. Bronze, Tin Plated  
B : Brass, Tin Plated
  - ② Crimp Angle: Blank: Low Crimp  
H: High Crimp
  - Applicable Wires: AWG# 22- 30
  - Thickness : 0.15mm
  - Q'ty:15,000 Pcs/Reel

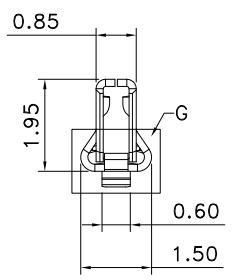
△	Dim.	A	B
	Crimp		
	TX	1.9	2.0
	TXH	2.2	2.4



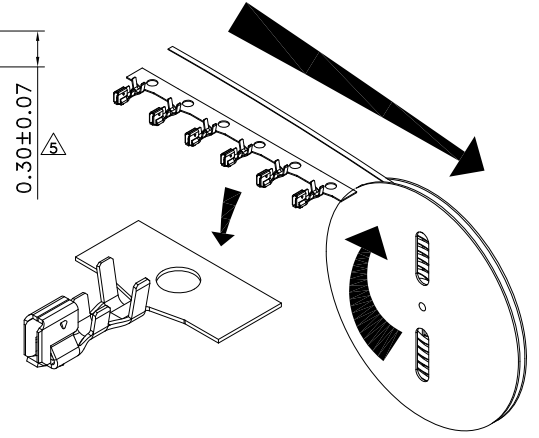
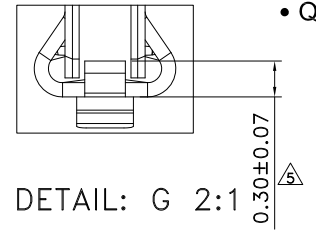
SECTION A-A



SECTION B-B



SECTION C-C



TOLERANCE	LTR	REVISION RECORD	NAME	DATE
.0	±0.30	△ 變更包裝數量及重新整理圖面	朱佑武	12/05/16
.00	±0.20	△ 依實物修正圖面LOGO方向	JACK ZHOU	12/06/11
.000	±0.10	△ 增加黃銅材質選項	張逸維	2012/12/14
		△ 依規格書修正操作溫度	吳弘文	2014/02/18
		△ 增加端子舌片尺寸管控	邱建輝	2014/03/06
		△ Add Crimp Angle Option	Erin	2017/03/10
SHEET	1/1			

Singatron Enterprise Co., Ltd.				
TITLE	2.00mm Crimp Style Connectors			
DWN	Erin	PART NO. 2WT2002H-T X X		
CHKD	Tom Shih	SCALE 1:1	UNIT: mm	④
APVD	Tom Shih	SIZE: A3	SHEET: 1 OF 1	REV:
CUSTOMER COPY				