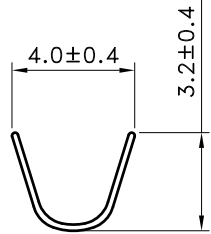
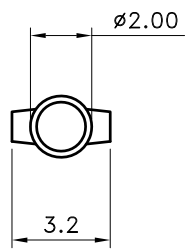


■ SPECIFICATIONS

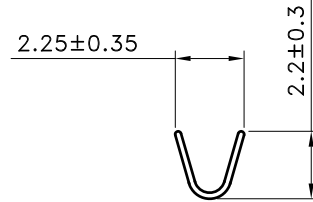
- Voltage Rating : 250 V AC/DC
- Current Rating : 6 A AC/DC
- Withstanding Voltage : 1,500V AC/minute
- Insulation Resistance : 1,000MΩ min
- Temperature Range : - 25°C to + 105°C
- Contact Resistance : 20mΩ max

■ TERMINAL

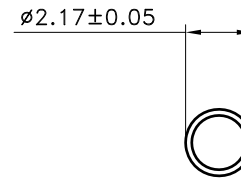
- Part No. : 2WT24158BS-2
- Applicable Wires : AWG # 18 - 24
- Material : Brass
- Finish : Tin Plated
- Thickness : 0.2 mm
- Q' ty : 7,000 pcs./Reel



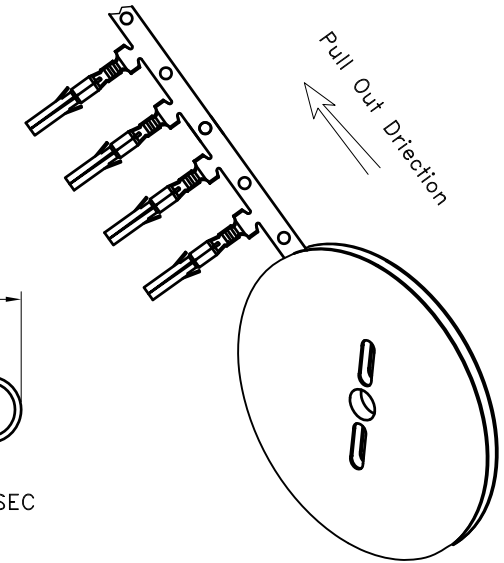
A-A SEC



B-B SEC



C-C SEC



TOLERANCE	LTR	REVISION RECORD	NAME	DATE	LTR	REVISION RECORD	NAME	DATE
.0	±0.30	△ ECR 200609-002	陳文松	2006/09/15	△			
.00	±0.20	△ ECR 200612-002	林文彬	2006/12/20	△			
.000	±0.10	△ ECR 200905-004	黃科源	2009/05/07	△			
ANGLE		△ 增加端子捲繞方向圖	吳弘文	2014/10/23				
0°	±1°	△ 修定規格	吳弘文	2014/12/31				
.0°	±	△						
SHEET	1/1	△						

Singatron Enterprise Co., Ltd.

TITLE	Ø1.58mm Power Connectors Terminal			
DWN	吳弘文	PART NO.	2WT24158BS-2	
CHKD	周慈雲	SCALE	1:1	UNIT: mm
APVD	張育瑞	SIZE:	A3	SHEET: 1 OF 1

CUSTOMER
Conforms to The RoHS Instruction

CUSTOMER COPY