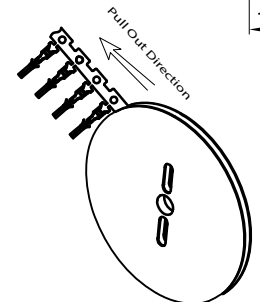
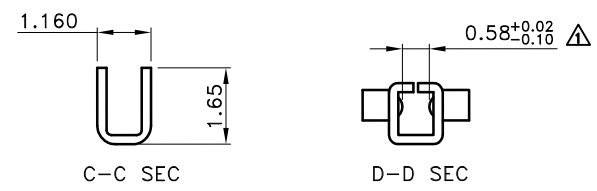
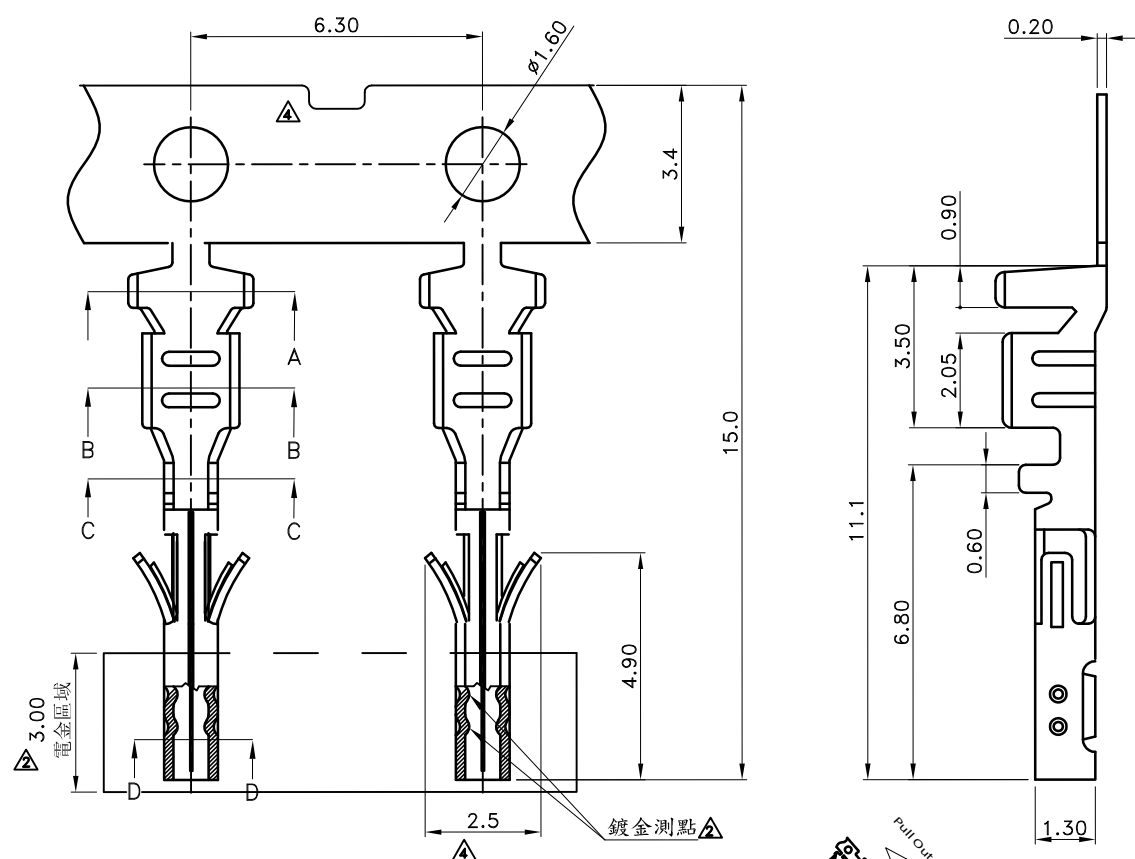
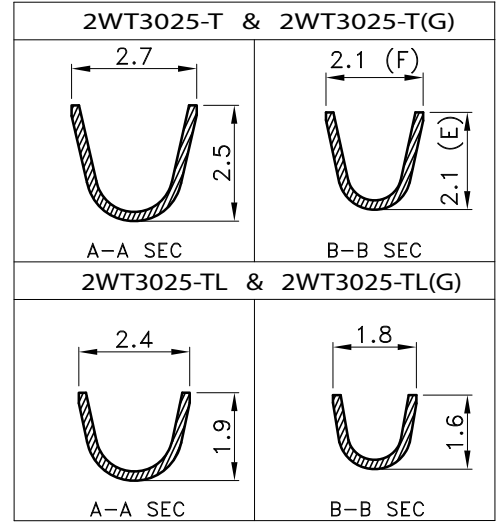


1 2 3 4 5 6 7 8



- SPECIFICATIONS**
- Current rating : 5A AC/DC
 - Withstanding voltage : 1,500V AC/minute
 - Insulation resistance : 1,000M Ω min. initial
 - Temperature range : - 40°C to + 85°C
 - Contact resistance : 20m Ω max.

- TERMINAL**
- Part No.: 2WT3025-TX (X)
 - ① Crimp Angle
Blank : High Crimp
L : Low Crimp
 - ② Plated
Blank : 120U' min. TIN over 30U' min. NICKEL
G : 0.8U' min. AU over 30U' min. NICKEL.
 - Applicable Wire :
1. High Crimp : AWG #20~24
2. Low Crimp : AWG #26~30
 - Material : Phos. Bronze
 - Plated : Reference to the said options
 - Q' ty : 10,000 pcs./Reel



TOLERANCE	LTR	REVISION RECORD	NAME	DATE	LTR	REVISION RECORD	NAME	DATE
.0	±0.30	△ ECR 201012 005 修改圖面尺寸 併圖	吳沛倫	2010/12/22				
.00	±0.20	△ 增加鍍金區域, 測點及電鍍規格	黃廣珍	2013/08/20				
.000	±0.10	△ 增加端子捲繞方向圖	吳弘文	2014/10/23				
ANGLE		△ 按實物修改料帶形狀及變更尺寸管控	吳小平	2015/07/07				
0°	±1°	△						
.0°	±	△						
SHEET	1/1	△						

Singatron Enterprise Co., Ltd.			
TITLE	3.00mm Power Connector, Crimp Terminal		
DWN	吳小平	PART NO.	2WT3025-TX
CHKD	周家慶	SCALE	1:1 UNIT: mm
APVD	張育瑞	SIZE	A3 SHEET: 1 OF 1 REV: a4
CUSTOMER COPY			

CUSTOMER

Conforms to The RoHS Instruction

F
E
D
C
B
A

F
E
D
C
B
A

1 2 3 4 5 6 7 8