

1 2 3 4 5 6 7 8

F

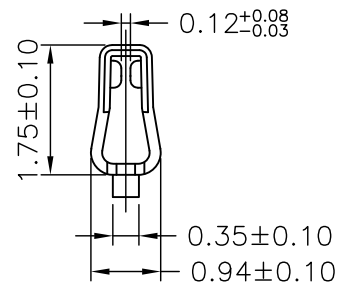
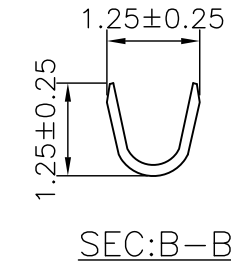
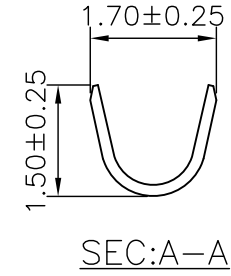
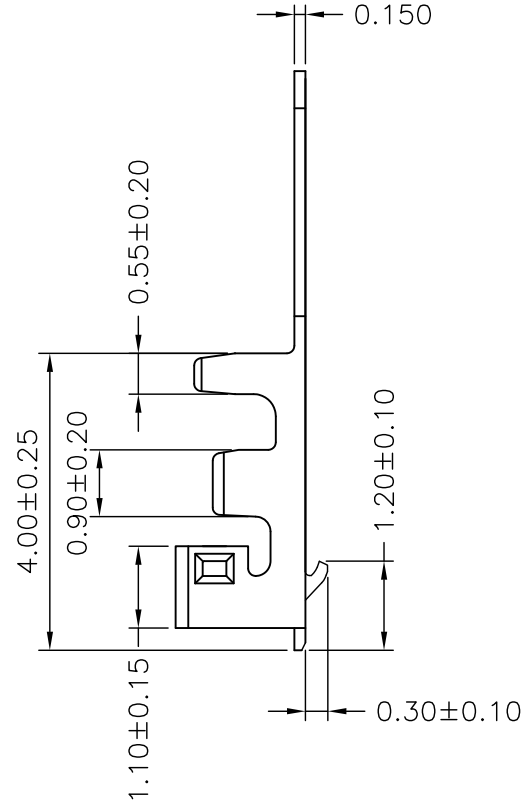
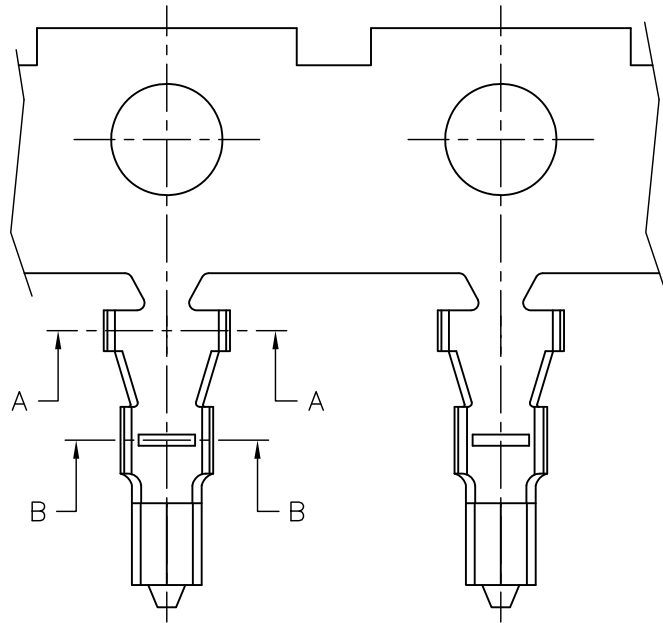
E

D

C

B

A



Ordering Information & Specifications

Part No	Wire Range	Insulation O.D.	Material	Finish	Qty/reel
2WTA1251-TPE	AWG#28-#32	1.00mm(max)	Phosphor Bronze	Tin-plated	10,000pcs

Note:E-Stamping before Tin-plated

B3	NEW RELEASE	2014.05.26	劉包根
REV.	DESCRIPTION	DATE	NAME

GENERAL TOLERANCE		ANGLE±
X. X±0.25		
X. XX±0.15		
X. XXX±0.05		

Singatron Enterprise Co., Ltd.

TITLE	1.25mm PITCH CRIMP TERMINAL		
DWN	修正- 2009.10.20	PART NO.	2WTA1251-TPE
CHKD		SCALE 1:1	UNIT: mm
APVD	修正- 2009.10.20	SIZE: A3	SHEET: 1 OF 1 REV: B3

CUSTOMER COPY

1 2 3 4 5 6 7 8