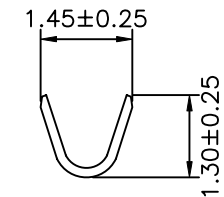
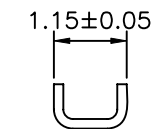


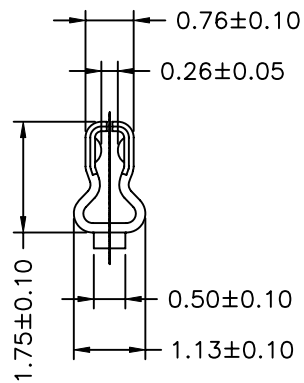
SEC:A-A



SEC:B-B



SEC:C-C



Ordering Information & Specifications

Part No.	Wire Range	Insulation O.D.	Material	Finish	Q'ty/Reel
2WTA1501-TPE-A	AWG#24-#28	1.10mm(max)	Phosphor Bronze	Tin-plated	10,000pcs
2WTA1501-GPE-A	AWG#24-#28	1.10mm(max)	Phosphor Bronze	Gold-plated	10,000pcs

Note:E-Stamping before Tin-plated or Gold-plated

REV.	DESCRIPTION	DATE	NAME	GENERAL TOLERANCE	ANGLE±
A1	EN150910001	2015.09.10	郭木思	X.X±0.25	ANGLE±
A0	NEW RELEASE	2015.07.28	郭木思	X.XX±0.15	
				X.XXX±0.05	

Singatron Enterprise Co., Ltd.

TITLE 1.50mm PITCH CRIMP TERMINAL

DWN 郭木思 PART NO. 2WTA1501-XX-A

CHKD 2015.07.28 SCALE 1:1 UNIT: mm

APVD 陳彥兆 SIZE: A3 SHEET:1 OF 1 REV: A1

CUSTOMER COPY