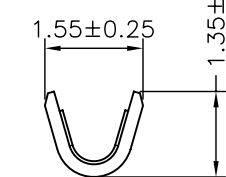
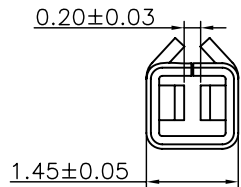


SEC:A-A



SEC:B-B



Ordering Information & Specifications

Part No.	Wire Range	Insulation O.D.	Material	Finish	Q'ty/Reel
2WTA2006-TPE	AWG#22-#30	1.45mm(max)	Phosphor Bronze	Tin-plated	10,000pcs
2WTA2006-GPE	AWG#22-#30	1.45mm(max)	Phosphor Bronze	Gold-plated	10,000pcs

Note:E-Stamping before Tin-plated or Gold-plated

REV.	DESCRIPTION	DATE	NAME	GENERAL TOLERANCE	ANGLE±
A0	NEW RELEASE	2012. 10. 29	周傑亮	X. XX±0. 15	▽
				X. XX±0. 25	▽
				X. XXX±0. 05	▽

Singatron Enterprise Co., Ltd.

TITLE	2.00mm PITCH CRIMP TERMINAL			
DWN	董正一	PART NO.	2WTA2006-XX	
CHKD	2012. 10. 29	SCALE	1:1	UNIT: mm
APVD	董正一	SIZE:	A3	SHEET: 1 OF 1

CUSTOMER COPY