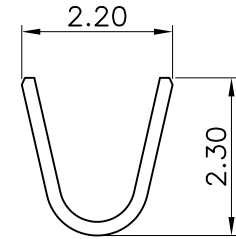
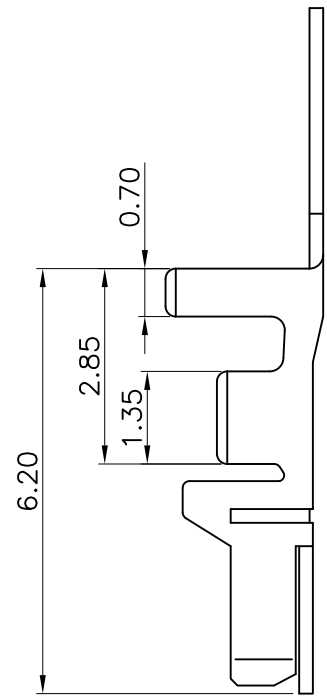
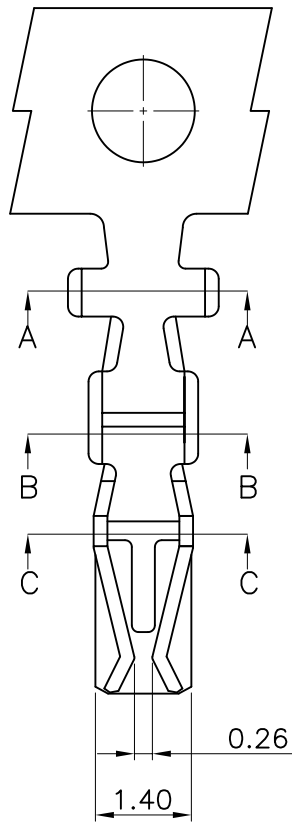
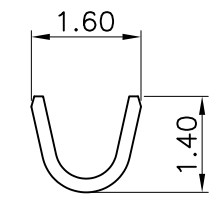


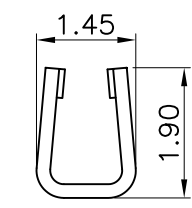
REV	ECN NO.	DESCRIPTION	DATE	APP'D
A/0		RELEASE TO PRODUCTION	07/08/11	Paul
A/1	N/A	MODIFY O.D. DIMENSION & WIRE RANGE	09/10/16	Paul
A/2	N/A	ADD FINISH PLATED(AE100)	02/23/17	Paul



Section A-A



Section B-B



Section C-C

- NOTES: MATERIAL: PHOSPHOR BRONZE, t=0.20mm.
 2. USE WITH: 2WBTU2008 SERIES HOUSING
 3. FINISH: A TIN-PLATED OVER NICKEL.
 AE PRESSING BEFORE TIN-PLATED OVER NICKEL.
 AE100 PRESSING BEFORE 100u" BRIGHT-TIN PLATED OVER NICKEL.
 GO GOLD FLASH OVER NICKEL.
 G* GOLD *U" OVER NICKEL.
 4. APPLICABLE WIRE RANGE: AWG#24~#28
 5. INSULATION O.D.: ϕ 1.40mm(MAX.)
 6. ORDERING CODE : 2WTTU2008TPO-*

FINISH SEE NOTE 3

TOLERANCE	
X.	\pm 0.30
X.X	\pm 0.25
X.XX	\pm 0.15
X.XXX	\pm 0.08
ANGULA	3°
UNLESS OTHERWISE SPECIFIED	

Singatron Enterprise Co., Ltd.			
TITLE	WIRE TO BOARD, PLUG, PITCH 2.00mm, CRIMP TYPE, CONTACT		
DWN	Rev: 02/23/17	PART NO. 2WTTU2008TPO-*	
CHKD	Rev: 02/23/17	SCALE 1:1	UNIT: mm
APVD	Rev: 02/23/17	SIZE: A3	SHEET 1 OF 2
			REV: A/2
CUSTOMER COPY			

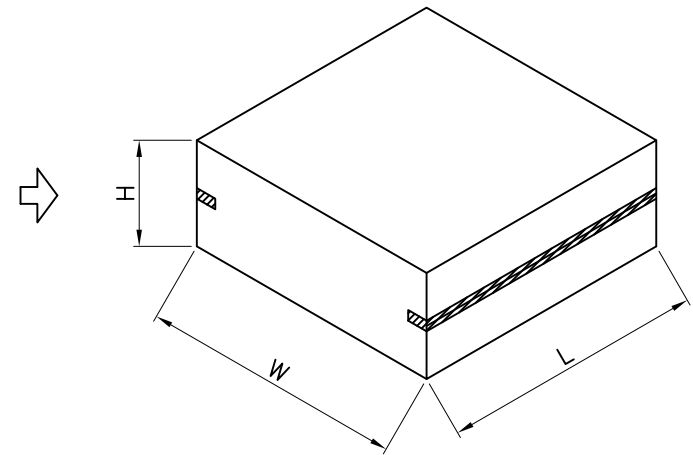
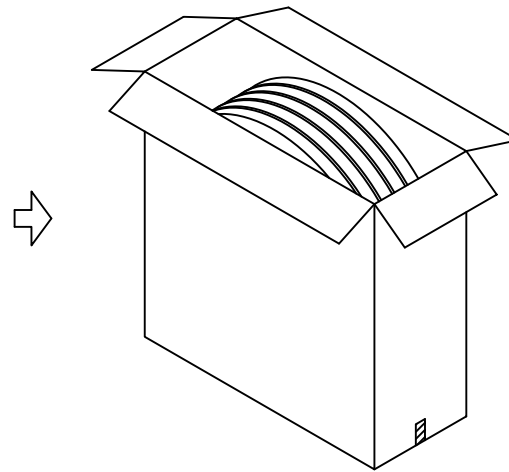
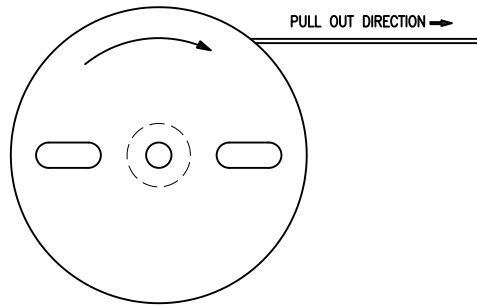
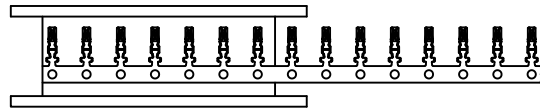
REV	ECN NO.	DESCRIPTION	DATE	APP'D
A/0		RELEASE TO PRODUCTION	07/08/11	Paul
A/1	N/A	MODIFY O.D. DIMENSION & WIRE RANGE	09/10/16	Paul
A/2	N/A	ADD FINISH PLATED(AE100)	02/23/17	Paul

PACKING MATERIAL

PART NAME	DIM(mm)
CARTON	470*470*210

PACKING CAPACITY

PART NO.	PCS/RE	RE/BC	PCS/BC
2WTTU2008TPO-*	10,000PCS/RE	8 RE/BC	80,000 PCS/BC



TOLERANCE	
X.	±0.30
X.X	±0.25
X.XX	±0.15
X.XXX	±0.08
ANGULA	3°
UNLESS OTHERWISE SPECIFIED	

Singatron Enterprise Co., Ltd.

TITLE	WIRE TO BOARD, PLUG, PITCH 2.00mm, CRIMP TYPE, CONTACT		
DWN	By: Wang 02/23/17	PART NO. 2WTTU2008TPO-*	
CHKD	By: Wang 02/23/17	SCALE 1:1	UNIT: mm
APVD	By: Wang 02/23/17	SIZE: A3	SHEET 2 OF 2 REV: A/2

CUSTOMER COPY