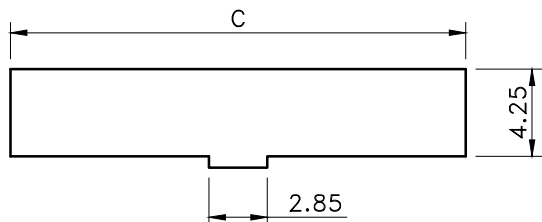
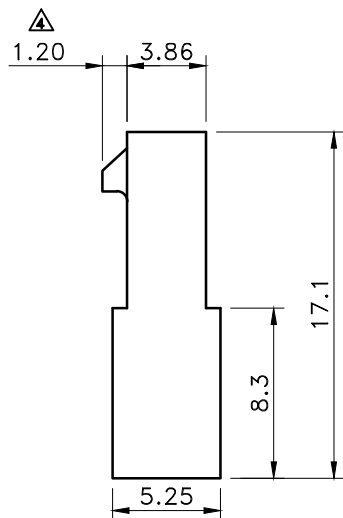
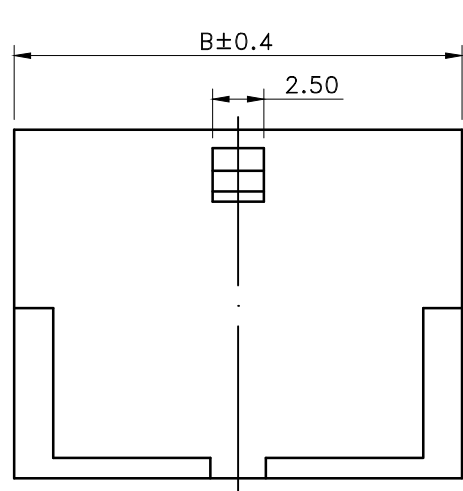
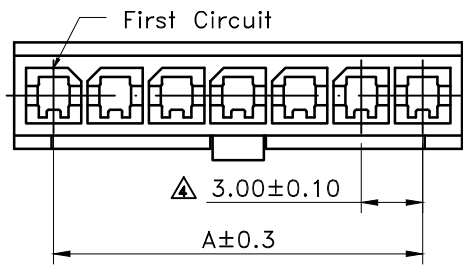


1 2 3 4 5 6 7 8



△ Recommend Panel cut-out
General Tolerance ±0.05



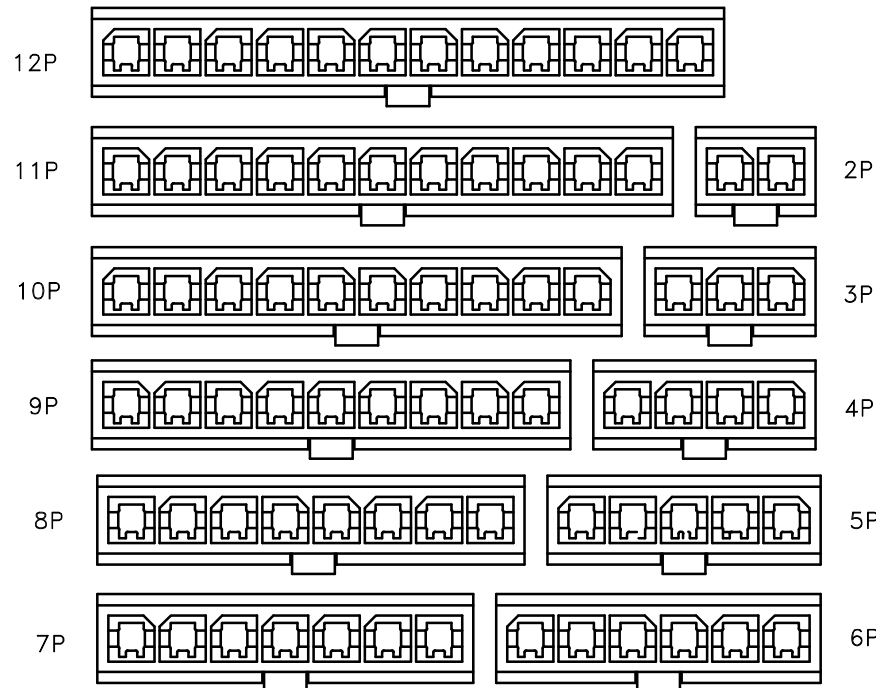
Poles	Dimensions (mm)		
	A	B	C
2	3.00	6.85	7.20
3	6.00	9.85	10.20
4	9.00	12.85	13.20
5	12.00	15.85	16.20
6	15.00	18.85	19.20
7	18.00	21.85	22.20
8	21.00	24.85	25.20
9	24.00	27.85	28.20
10	27.00	30.85	31.20
11	30.00	33.85	34.20
12	33.00	36.85	37.20

■ SPECIFICATIONS

- Current rating : 5A AC/DC
- Withstanding voltage : 1,500V AC/minute
- Insulation resistance : 1,000M Ω min. initial
- △ • Temperature range : -40°C ~ +105°C
- Contact resistance : 20m Ω max.

■ PLUG HOUSING

- Part No. : 2WW3024S-XX WO/E
- Poles : 2-12(Single Row)
- Material : Nylon 66 UL 94V-0
- Q' ty : 1000 pcs./Bag



TOLERANCE	LTR	REVISION RECORD	NAME	DATE	LTR	REVISION RECORD	NAME	DATE
.0	±0.30	△1			△8			
.00	±0.20	△2			△9			
.000	±0.10	△3			△10			
ANGLE		△						
0°	±1°	△5						
.0°	±	△6						
.	1/1	△7						

CUSTOMER

Conforms to The RoHS Instruction

Singatron Enterprise Co., Ltd.

TITLE	3.00mm Single-Row Wire to Wire Power Connector Series.			
DWN	李柏昇	PART NO.	2WW3024S-XX WO/E	
CHKD	簡鴻彬	SCALE	1:1	UNIT: mm
APVD	張育瑞	SIZE	A3	SHEET: 1 OF 1 REV: a5

CUSTOMER COPY

1 2 3 4 5 6 7 8