

Poles	D
02~12	8.7
16,18	14.5

Assembled Dimension

SPECIFICATIONS

- Current Rating : 3A AC/DC
- Withstanding Voltage : 1,500V AC/minute
- Insulation Resistance : 500MΩ min.
- Temperature Range : -25℃ to +85℃
- Contact Resistance : 10mΩ max.

RECEPTACLE

- Part No. : 2WW6504-XX X

① Poles : ① ②

1. Single-Row : 02~12

2. Dual-Row : 16,18

② Base Color : Blank : Black
W : White

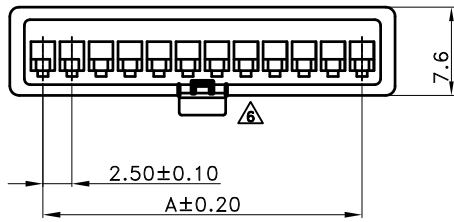
• Material : Nylon 66 UL94V-0

• Q'ty/Packing :

1. 1,000 Pcs / 1 Bag(02~03 Circuit)

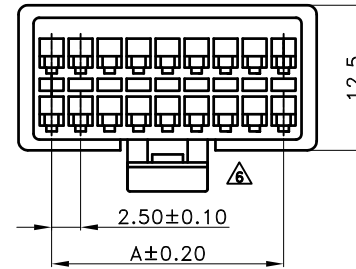
2. 500 Pcs / 1 Bag(04~12,16,18 Circuit)

Single-Row

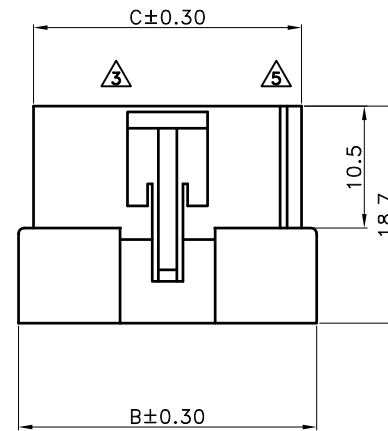
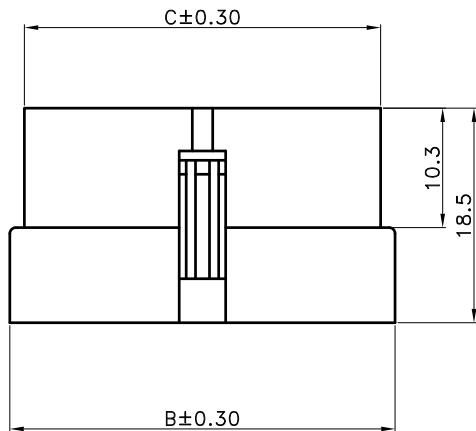


Poles	Dimensions		
	A	B	C
02	—	8.1	5.5
03	5.00	10.7	8.0
04	7.50	13.2	10.6
05	10.00	15.7	13.1
06	12.50	18.2	15.6
07	15.00	20.7	18.1
08	17.50	23.2	20.7
09	20.00	25.7	23.1
10	22.50	28.4	25.6
11	25.00	30.7	28.1
12	27.50	33.2	30.7

Dual-Row



Poles	Dimensions		
	A	B	C
16	17.50	23.2	20.6
18	20.00	25.7	23.1



TOLERANCE	LTR	REVISION RECORD	NAME	DATE
.0	±0.30	圖面遺失	余秀麗	2005/05/15
.00	±0.20	圖面合併	黃科源	2008/04/30
.000	±0.10	圖面與實物不符	王誠賢	2010/05/12
ANGLE		修改產品尺寸	王誠賢	2011/08/19
0°	±1°	修正產品外觀	王誠賢	2011/12/02
.0°	±	修正產品外觀	吳弘文	2013/12/10
SHEET	1/1	增加顏色選項	吳弘文	2015/01/28

Singatron Enterprise Co., Ltd.

TITLE **2.50mm Wire to Wire Connector**

DWN 吳弘文 PART NO. 2WW6504-XX

CHKD 周慈雲 SCALE 1:1 UNIT: mm

APVD 張育瑞 SIZE: A3 SHEET: 1 OF 1 REV: A4

CUSTOMER COPY