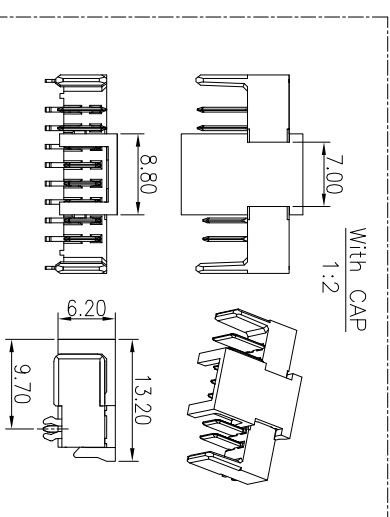
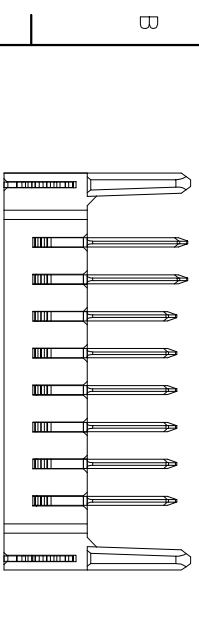
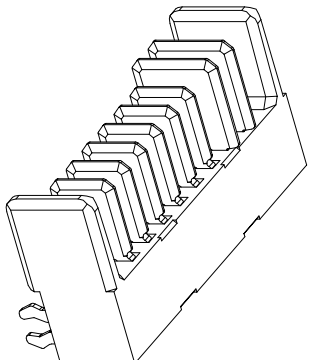
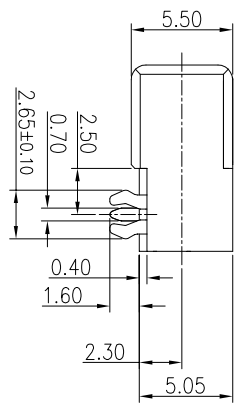


RECOMMENDED PCB LAYOUT (TOP VIEW)  
GENERAL TOLERANCES: ±0.05 (t=1.2)

Stand-Off(Product)  
Stand-Off(CAP)

SPECIFICATIONS:

- ELECTRICAL CHARACTERISTICS:
  - CONTACT RESISTANCE: 30mΩ MAX.(INITIAL)
  - DIELECTRIC WITHSTANDING VOLTAGE: 500V AC FOR ONE MINUTE
  - INSULATION RESISTANCE: 1000M Ω·MM. MEASURED BY 500 VDC
- MECHANICAL CHARACTERISTICS:
  - INSERTION FORCE : 45N MAX.
  - WITHDRAWAL FORCE : 10N MIN.
- LIFE TEST: 500 CYCLES MIN.
- OTHER GENERAL SPEC. TO REFER "2ST3Y13-008411F\_SPEC".
- TO CONFORM TO SINGATRON HAZARDOUS SUBSTANCE FREE SPECIFICATION
- HALOGEN FREE PRODUCT IDENTIFICATION LOGO ON PACKAGING:



E	FORK	2	Brass	0.3T	Mat-1in-100u" MIN PLATED ALL OVER
D	CONTACT-S	6	Bross	0.5T	G/F AT CONTACT AREA-MAT-1IN 100U" MIN AT TAIL AND IN UNDERPLATED
C	CONTACT-B	2			
B	CAP	1	LCP+30%GF	UL94V-0	BLACK
A	HOUSING	1	LCP+30%GF	UL94V-0	BLACK
NO	DESCRIPTION	QTY	MATERIAL	PLATING & COLOR	
UNLESS OTHERWISE SPECIFIED TOLERANCES					
SINGATRON ENTERPRISE CO., LTD. 信音企業股份有限公司					
TITLE BATTERY 8Pin PLUG,DIP Type:CH=2.3mm					
DWG Ddk PART NO.2BA3Y13-008411F					
CHKD SCALE 2.5:1 UNIT: mm					
APVD BOYE SIZE: A4 SHEET: 10F1 REV:A					
CUSTOMER COPY					

REV.	EGN NO	OR DESCRIPTION	REVISED	DATE
A	PDR	NO.T131114-3A	Ddk	2014.02.19