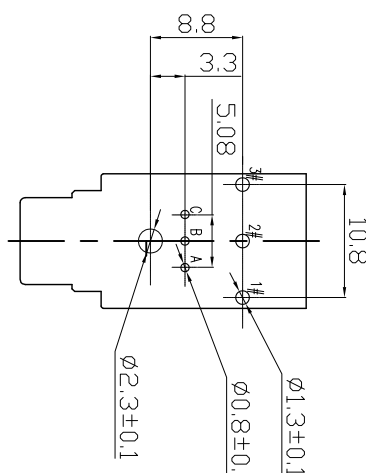
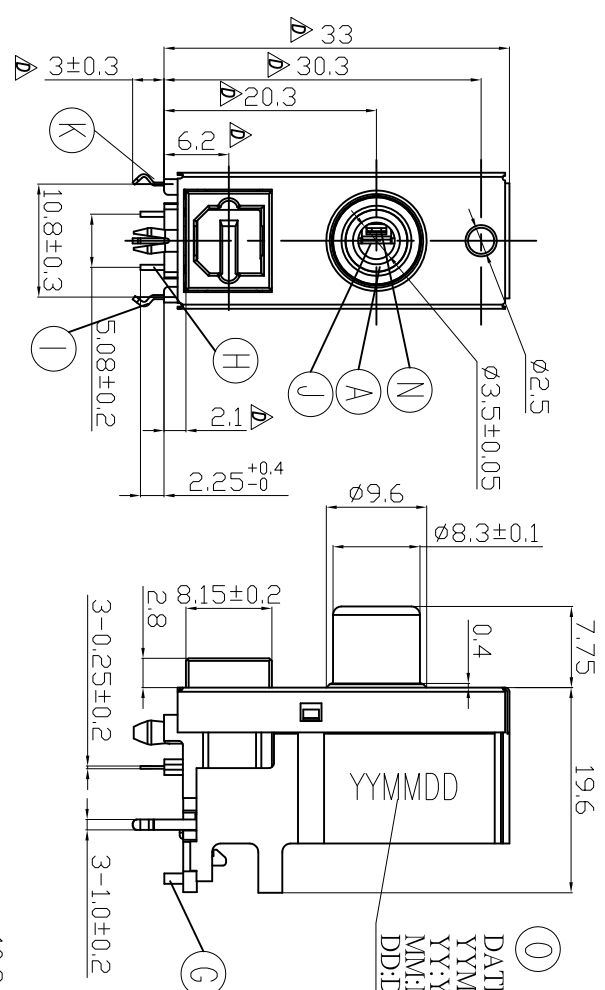
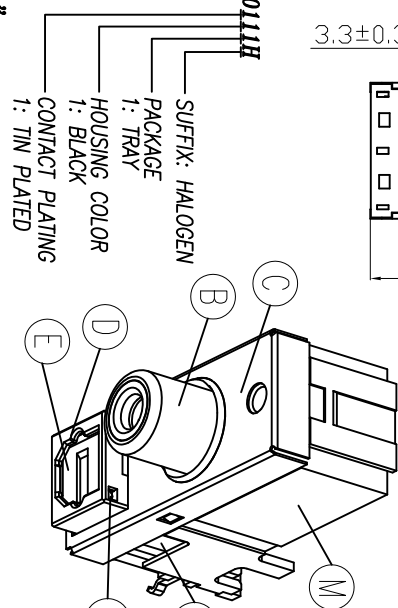


REV/ECN NO OR DESCRIPTION	REVISED	DATE
A PDR RELEASE	IV-C	2012.09.18
B ECN NO:140070	IV-C	2014.10.20
C ECN NO:150029	IV-C	2015.03.19
D ECN NO:160038	IV-C	2016.04.28

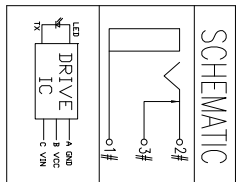
DATE CODE
YYMMDD
YY:YEAR(11~12)
MM:MONTH(01~12)
DD:DAY(1~31)



T:1.6 Dimensions of PC board holes
Tolerance : ± 0.05 (Printed-top view)



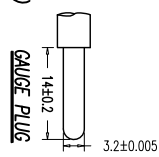
SUFFIX: HALOGEN
PACKAGE
1: TRAY
HOUSING COLOR
1: BLACK
CONTACT PLATING
1: TIN PLATED



"TABLE 1"

PART NO.	RCA WASHER COLOR	OPTO GATE COLOR
2KJ1531-000111H	ORANGE(157C)	LIME(577C)

- SPECIFICATIONS:
- RCA JACK:
 - VOLTAGE AND CURRENT RATING: 12V & 1AMP.
 - CONTACT RESISTANCE: 30mΩ MAX.
 - INSULATION RESISTANCE: 100MΩ MIN. @ 500V DC.
 - DIELECTRIC WITHSTANDING VOLTAGE: 500V AC FOR 1 MINUTE.
 - INSERTION FORCE: 0.3~3.0kgf.
 - EXTRACTION FORCE: 0.3~3.0kgf.
 - WITHDRAWAL FORCE FOR CENTER CONTACT: 0.08kgf MIN. (USE A 0D=3.2±0.005mm, LENGTH=14±0.2mm GAUGE PLUG)
 - TERMINAL STRENGTH: THE TERMINAL SHALL BE CAPABLE OF WITHSTANDING A FORCE OF 3kgf APPLIED IN ANY DIRECTION FOR 0.5 SEC WITHOUT LOSING AND BREAKDOWN.
 - LIFE TEST: 1,500 CYCLES.
 - TEMPERATURE RANGE: -25°C ~ +70°C.
 - TOSLINK:
 - VOLTAGE RATING: $V_{cc}=0.5\sim 7V$, $V_{in}=-0.5\sim 7.5V$
 - CURRENT RATING: 25mA
 - INSULATION RESISTANCE: 100MΩ MIN.
 - DIELECTRIC WITHSTANDING VOLTAGE: 3.5KV AC (50Hz) FOR 1 MINUTE.
 - INSERTION FORCE: 2.5kgf MAX.
 - EXTRACTION FORCE: 0.5kgf MIN.
 - LIFE TEST: 1,500 CYCLES.
 - TEMPERATURE RANGE: -25°C ~ +70°C.
3. OTHER GENERAL SPEC. TO REFER "2KJ1531 SERIES SPEC".
 4. TO CONFORM TO THE SINGATRON HAZARDOUS SUBSTANCE FREE SPEC.
 5. GREEN PRODUCT IDENTIFICATION LABEL ON PACKAGING: **G.P.PAS5**
 6. PACKAGE: SEE "2KJ1531 SERIES" PACKAGE.
 7. FOR WAVE SOLDERING LEAD-FREE PROCESS, 260°C 5 SECS.



NO	DESCRIPTION	QTY	MATERIAL	PLATING & COLOR
O	INK			BLACK
N	INSULATION GRAIN	1	PA66 UL94-V0	BLACK
M	RCA HOUSING	1	PBT UL94-V0	BLACK
L	OPTO HOUSING	1	LCP UL94-V0	BLACK
K	TERMINAL #3	1	PHOSPHOR BRONZE	TIN PLATED
J	TERMINAL #2	1	BRASS	TIN PLATED
I	TERMINAL #1	1	BRASS	TIN PLATED
H	DRIVE IC (TX)	1	12.5Mbps	TIN PLATED
G	BOTTOM COVER	1	PBT UL94-V0	BLACK
F	OPTO SPRING	1	SUS 304	
E	OPTO GATE	1	PA9T UL94-V0	SEE"TABLE 1"
D	OPTO COVER	1	PA9T UL94-V0	BLACK
C	SHIELDING	1	BRASS	BLACK
B	BUSHING	1	BRASS	Cu/Sn PLATED
A	WASHER	1	PBT UL94-V0	Cu/Sn PLATED

UNLESS OTHERWISE SPECIFIED TOLERANCES

DECIMALS: ANGLES:

X :±0.5 X :±2°
 X.X :±0.3 X.X :±1°
 X.XX :±0.2

Singatron Enterprise Co., Ltd.
 信音企業股份有限公司

TITLE RCA JACK+TOSLINK, W/SHIELD, W/SCREW HOLE
 DWG W-C-2016.04.28 PART NO. 2KJ1531-000111H
 CHKD WNEJ2016.04.28 SCALE:2:2/1 UNIT: mm
 APVD WNEJ2016.04.28 SIZE: A3 SHEET: 1 OF 1 REV: D

CUSTOMER COPY