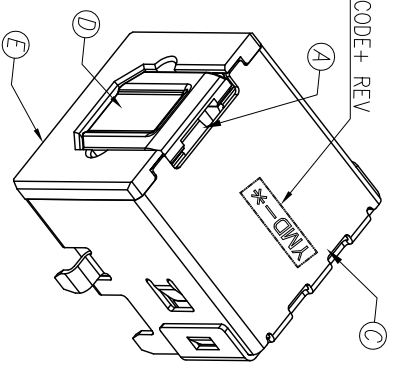
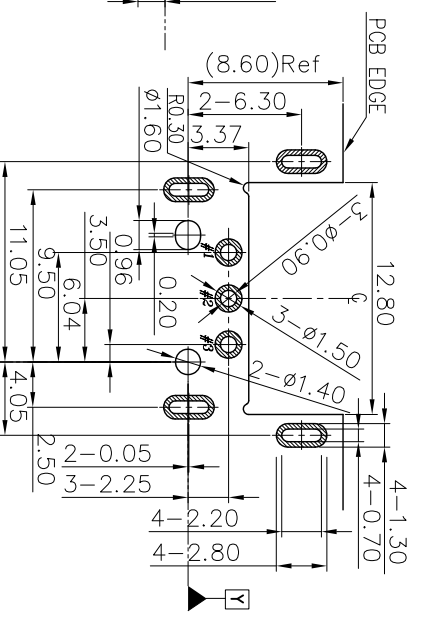
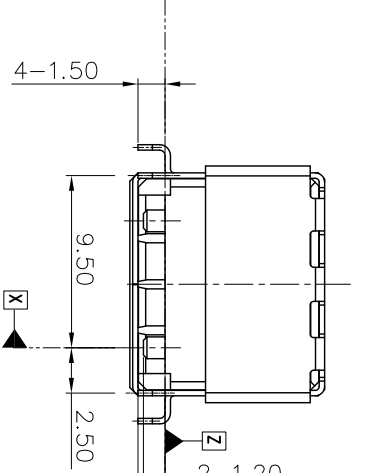
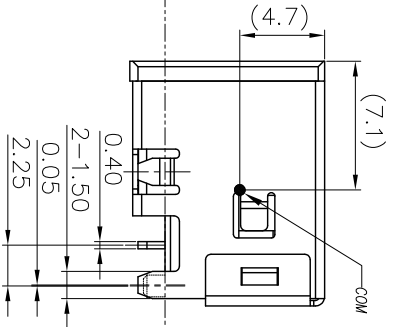
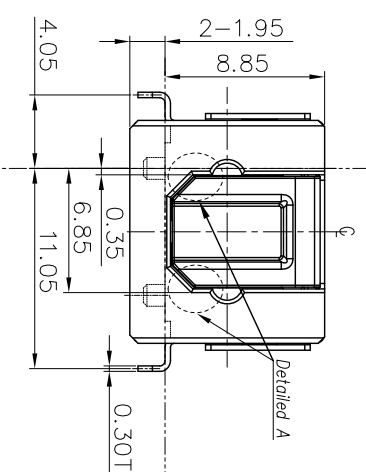


TRANSMITTER MODULE
Everlight Electronics
P/N: PL1232F/L5/A*(SING)

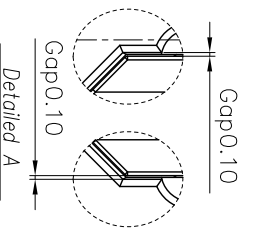
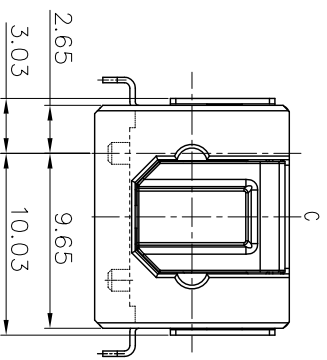
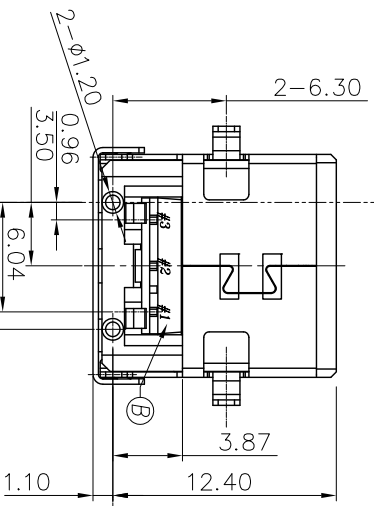


DATE CODE+ REV

- SPECIFICATIONS:
- ELECTRICAL CHARACTERISTICS:
 - RATING: 2.7~5.5V / 3~10mA
 - MECHANICAL CHARACTERISTICS:
 - INSERTION FORCE : 0.4~4.0 KGf
 - WITHDRAWAL FORCE : 0.4~4.0 KGf
 - LIFE TEST: 1,000 CYCLES
 - OTHER GENERAL SPEC. TO REFER "2KJ2000-001111F SPEC".
 - TO CONFORM TO THE SINGATRON HAZARDOUS SUBSTANCE FREE SPEC.
 - HALOGEN PRODUCT IDENTIFICATION MARK ON JACK: ©
 - HALOGEN PRODUCT IDENTIFICATION LABEL ON PACKAGING:
 - FOR REFLOW SOLDERING LEAD-FREE PROCESS.
 - PACKAGING: TAPE & REEL.



Recommended P.C.B Layout
TOP VIEW, TOL ±0.08



NO	DESCRIPTION	QTY	MATERIAL	PLATING & COLOR
A	SPRING	1	SUS 301-H 0.15T	Ni:40u"Min. PLATED
B	DRIVE IC	1	EPOXY & CDA-C19400	N/A
C	SHELL	1	SUS 304-3/4H T=0.3	Ni:60u"Min. PLATED
D	GATE	1	PA-10T+30%GF Vcmyl	BLACK
E	HOUSING	1	R630 (鑄) UL94V-HB	BLACK

UNLESS OTHERWISE SPECIFIED TOLERANCES

Singatron Enterprise Co., Ltd.
信登企業股份有限公司

DECIMALS: ANGLES:

X : ±0.5 X : ±2°
X.X : ±0.3 X.X : ±1°
X.XX : ±0.2

TITLE TOSLINK RECEPTACLE

DWN 14/11/27 PART NO. 2KJ2000-001111F

CHKD 14/11/27 SCALE: 1:1 UNIT: mm

APVD 14/11/27 SIZE: A3 SHEET: 1 OF 1 REV: A

CUSTOMER COPY