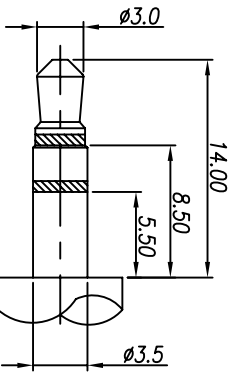
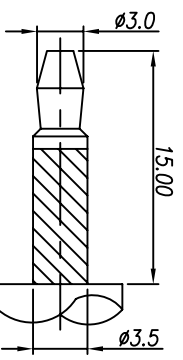
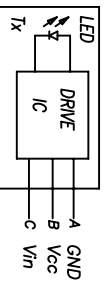
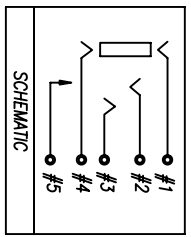


RECOMMENDED PCB LAYOUT
TOP VIEW (Tolerance:±0.05)



OPTICAL FIBRE PLUG

RECOMMEND MATING PLUG



SPECIFICATIONS:

- ELECTRICAL CHARACTERISTICS:
 - RATING: 12V 1A
 - CONTACT RESISTANCE: 30mΩMAX(INITIAL).
 - DIELECTRIC VOLTAGE WITHSTAND: 500V AC FOR ONE MINUTE
 - INSULATION RESISTANCE: 100MΩMIN. MEASURED BY 500 VDC
- MECHANICAL CHARACTERISTICS:
 - INSERTED FORCE : 3.5 KGS MAX.
 - WITHDRAWAL FORCE : 0.3~4.0 KGS
 - LIFE TEST: 5,000 CYCLES MIN.
 - PACKAGING: TAPE & REEL
 - TO CONFORM TO THE SINGATRON HSF SPEC.
 - HALOGEN FREE PRODUCT IDENTIFICATION MARK ON JACK: ©
 - HALOGEN FREE PRODUCT IDENTIFICATION LABEL ON PACKAGING: ☉
 - FOR LEAD-FREE PROCESS.

| REV. | ECN NO. | OR DESCRIPTION | REVISED | DATE |
|------|--------------------|----------------|---------|------------|
| A | PDR NO.:T090112-3A | | Sidney | 2009.01.13 |
| B | ECN NO.:S090506 | | Sidney | 2009.05.14 |

| NO | DESCRIPTION | QTY | MATERIAL | PLATING & COLOR |
|----|----------------|-----|----------------------------------|--|
| K | MYLAR FILM | 2 | | |
| J | IC DRIVE | 1 | EPOXY | TIN PLATING (Lead-Free) |
| I | SHIELDING | 1 | COPPOR ALLOY | TIN PLATING 600 °ON SOLDER TIN ALL OVER NICKEL PLATING. |
| H | EARTH SPRING-A | 1 | PHOSPHOR BRONZE | GOLD FLASH OVER ALL 500 ° IN |
| G | EARTH SPRING-B | 1 | PHOSPHOR BRONZE | GOLD FLASH OVER ALL 500 ° IN |
| F | EARTH TERMINAL | 1 | PHOSPHOR BRONZE | GOLD FLASH OVER ALL 500 ° IN |
| E | TIP SPRING | 1 | PHOSPHOR BRONZE | GOLD FLASH OVER ALL 500 ° IN |
| D | RING SPRING | 1 | PHOSPHOR BRONZE | GOLD FLASH OVER ALL 500 ° IN |
| C | CASE | 1 | HIGH TEMP THERMOPLASTIC UL 94V-0 | BLACK |
| B | COVER | 1 | HIGH TEMP THERMOPLASTIC UL 94V-0 | BLACK |
| A | BODY | 1 | HIGH TEMP THERMOPLASTIC UL 94V-0 | BLACK |

UNLESS OTHERWISE SPECIFIED TOLERANCES

DECIMALS: ANGLES:

X :±0.5 X :±2
X.X :±0.35 X.X :±1°
X.XX :±0.25

Customer Copy

Singatron Enterprise Co., Ltd.
信登企業股份有限公司

03.5 PHONE JACK (WITH IC)

DWN 50000014 PART NO. 251-G373-001
CHKD 10000019 SCALE: 3/1 UNIT: mm

APVD 10000020 SIZE: A3 SHEET: 1 OF 1 REV: B