

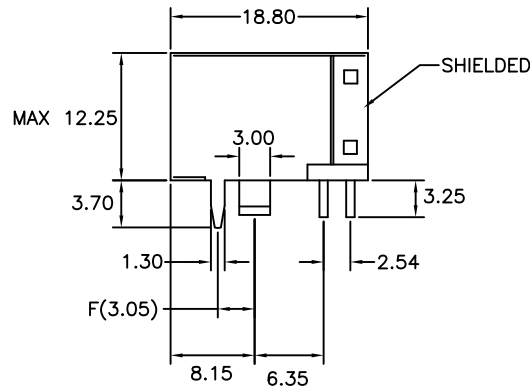
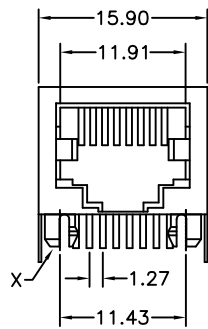
Side Entry Modular Telephone Jack

(Very Low Profile, Shielded, Single Port)

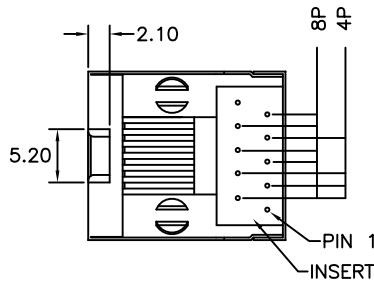
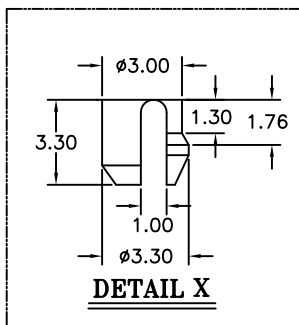
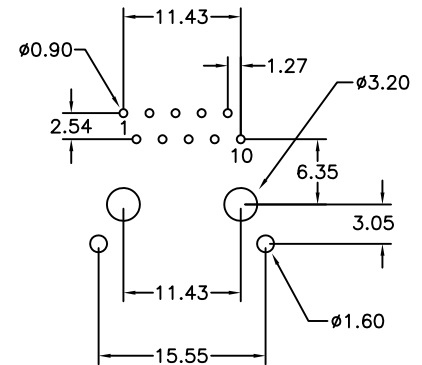
3011BS Series

Material and Finish:

- * Housing: PBT Polyester UL94V-0 Mixed Glass Fiber.
Standard Color: Black.
- * Contact: 0.35mm Thickness Phosphor Bronze Plated with Hard Gold and Gold Flash in Solder Area.
- * Shielded: 0.20mm Thickness Copper Alloy, Plated with Nickel.
- * Cavity confirms to FCC rules and regulations part 68, subpart F.
- * RoHS compliant.



P.C.B. Hole Layout



Ordering Information

| Series No. | No. of Position | No. of Contact | Contact Plating | Shielded Pins Type |
|------------|-----------------|----------------|-----------------|--------------------|
| 3011BS | 10 | 8 | 1 | 1 — S0 |
| | 10 | 2 | 6 μ " 1 | F Dimension |
| | | 4 | 15 μ " 2 | 3.05mm 1 |
| | | 6 | 30 μ " 3 | |
| | | 8 | 50 μ " 4 | |
| | | 10 | | |