

Side Entry Modular Telephone Jack

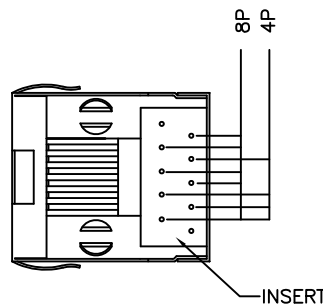
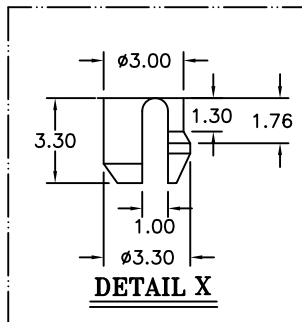
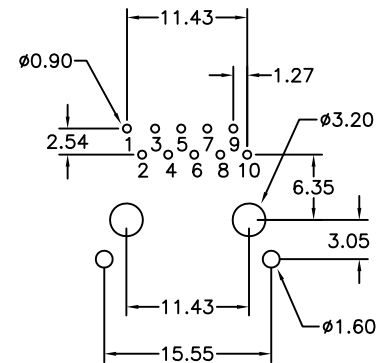
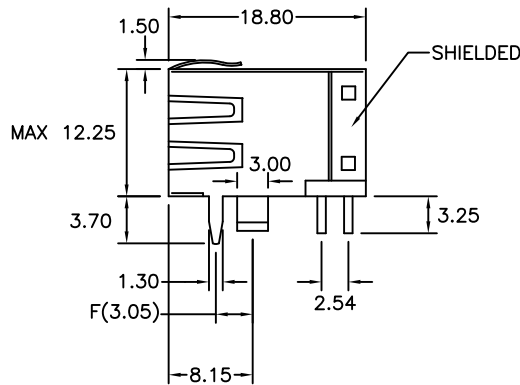
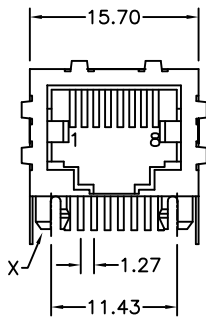
(Very Low Profile, Shielded, Single Port)

3011BS Series

Material and Finish:

- * Housing: PBT Polyester UL94V-0 Mixed Glass Fiber.
Standard Color: Black.
- * Contact: 0.35mm Thickness Phosphor Bronze Plated with Hard Gold and Gold Flash in Solder Area.
- * Shielded: 0.20mm Thickness Copper Alloy, Plated with Nickel.
- * Cavity conforms to FCC rules and regulations part 68, subpart F.
- * RoHS compliant.

P.C.B. Hole Layout



Ordering Information

Series No.	No. of Position	No. of Contact	Contact Plating	Shielded Pins Type
3011BS	10	8	1	1 — S3
	10	2	6 μ " 1	F Dimension
		4	15 μ " 2	3.05mm 1
		6	30 μ " 3	
		8	50 μ " 4	
		10		