

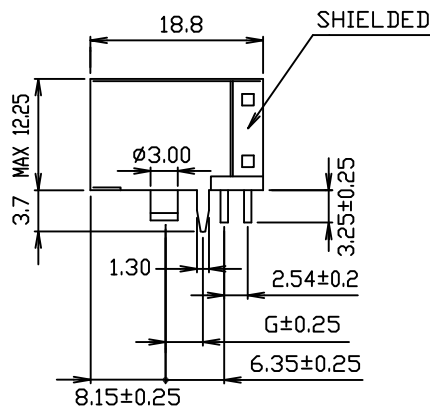
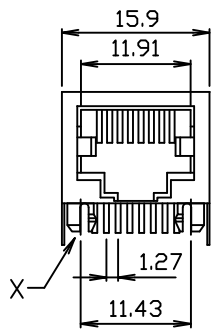
Side Entry Modular Telephone Jack

(Very Low Profile, Shielded, Single Port)

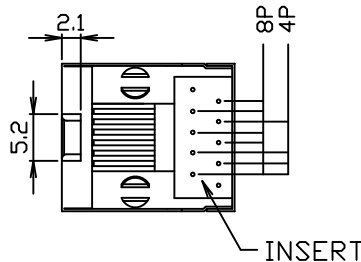
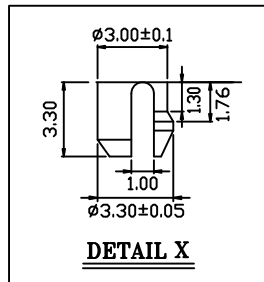
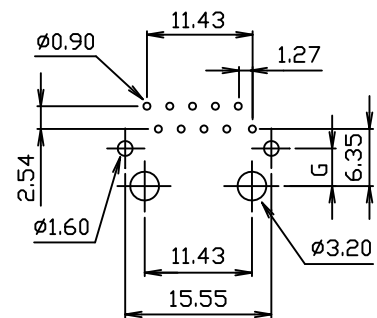
3011CS Series

Material and Finish:

- * Housing: PBT Polyester UL94V-0 Mixed Glass Fiber.
Standard Color: Black.
- * Contact: 0.35mm Thick Phosphor Bronze Plated with Hard Gold and Gold Flash in Solder Area.
- * Shielded: 0.25mm Thickness Copper Alloy, Plated with Nickel.
- * Cavity conforms to FCC rules and regulations part 68, subpart F.
- * RoHS compliant.



P.C.B. Hole Layout



Ordering Information

Series No.	No. of Position	No. of Contact	Contact Plating	Shielded Pins Type
3011CS	10	8	1	1
	10	2	6 μ"	G Dimension
		4	15 μ"	3.05mm 1
		6	30 μ"	3.65mm 2
		8	50 μ"	
		10	F μ"	