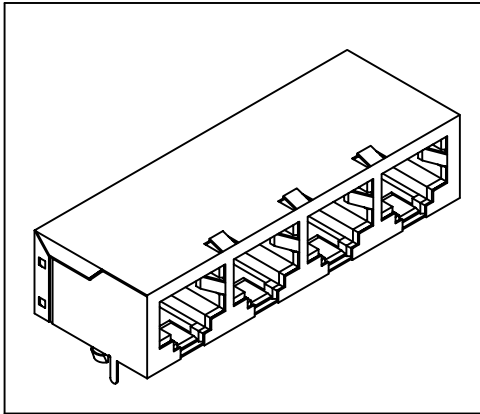


Side Entry Gang Jack

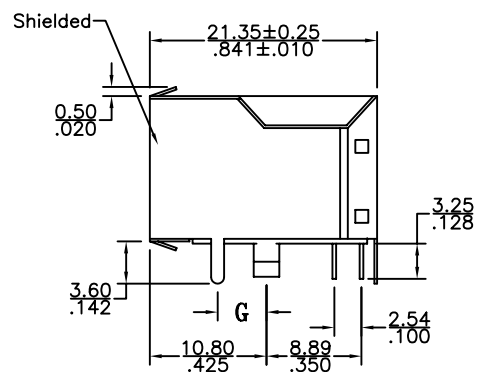
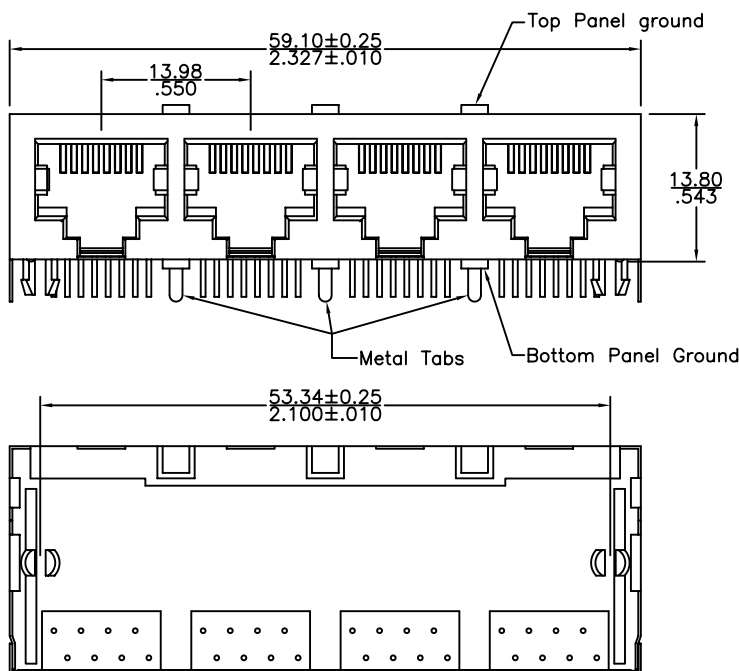
(Low Profile, Shielded, 4 Ports)

3013S1 Series

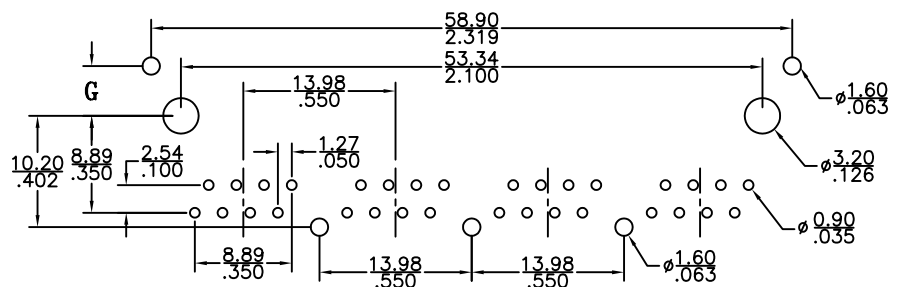


Material and Finish:

- * Housing: Standard Material: Glass Filled Polyester UL94V-0. Standard Color: Black.
- * Contact: 0.45mm(0.018") Thickness Phosphor Bronze. Gold Plating over Nickel.
- * Shielded: 0.25mm(0.010") Thickness Copper Alloy, Plated with Nickel.
- * Cavity conforms to FCC rules and regulations part 68, subpart F.
- * RoHS compliant.



P.C.B. Hole Layout



Ordering Information

Series No.	No. of Position	No. of Contact	No. of Ports	Contact Plating	Panel Ground Type	No. of Tabs	Shielded Pin Type
3013S1	8	8	04	1	2	3	1
	8	2	04	6 μ" 1	Non 0	No Tab 0	G Dimension
		4		15 μ" 2	Top Side 1	1 Tab 1	3.05mm 1
		6		30 μ" 3	Top & Bottom 2	3 Tabs 3	3.65mm 2
		8		50 μ" 4	2 Sides		4.57mm 3