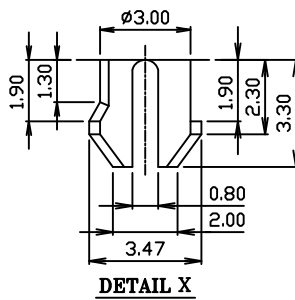
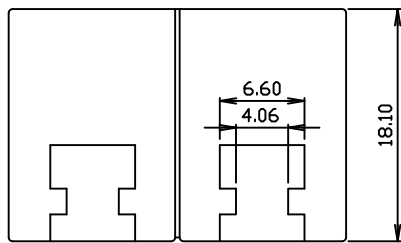
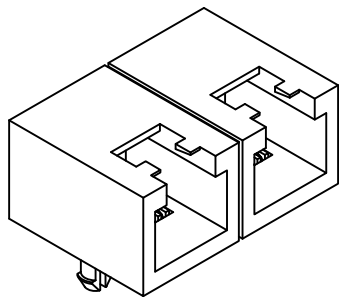


# Side Entry Telephone Modular Jack

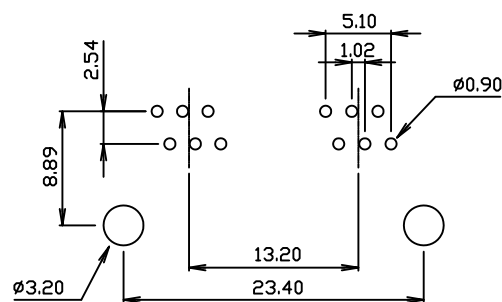
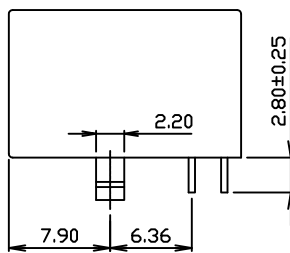
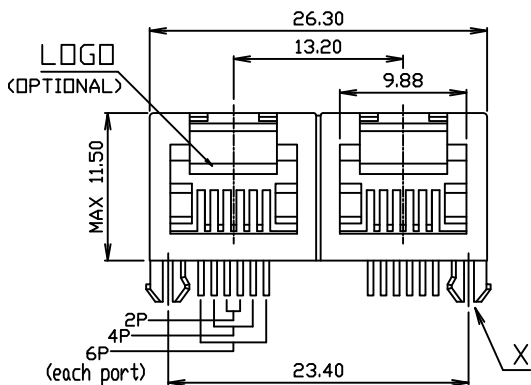
3045 Series

## Material and Finish:

- \* Housing: PBT Polyester UL94V-0 mixed Glass Fiber.  
Standard Color : Black.
- \* Contact: 0.45mm(0.018") Diameter Phosphor Bronze.  
Plated with Hard Gold.
- \* Cavity confirms to FCC rules and regulations part 68,  
subpart F.
- \* RoHS compliant.



## P.C.B. Hole Layout



## Ordering Information

Series No.	No. of Position	No. of Contact	Keyed	Contact Plating	No. of Ports	
3045	6	6	2	1	02	
	6	2	w/o key 2	6 $\mu$ " 1	2 Port 02	Black <input type="checkbox"/>
		4		15 $\mu$ " 2		Gray <input type="checkbox"/>
		6		30 $\mu$ " 3		
				50 $\mu$ " 4		
				F $\mu$ " 0		