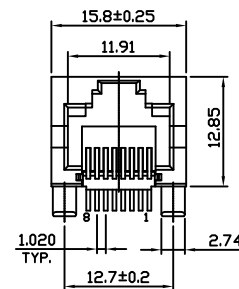
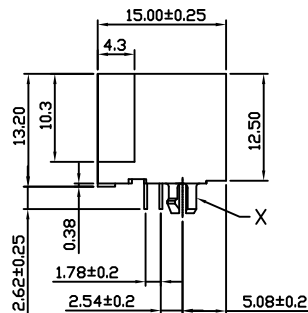
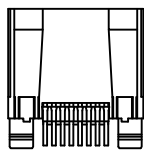


Low Profile Side Entry Modular Jack

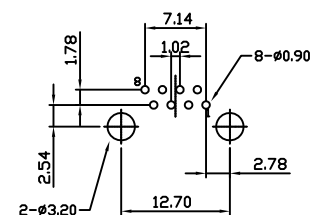
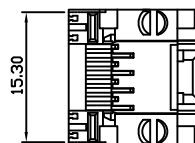
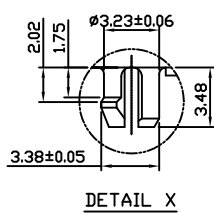
3714 Series

Material and Finish:

- * Housing: DSM Stanyl TE250F6 (Nylon-46) Heat Deflction Temp.290°C
Black color, UL94V-0
- * Contact: 0.35mm Thick Phosphor Bronze Plated with Hard Gold
And Gold Flash in Solder Area.
- * Cavity confirms to FCC rules and regulations part 68,
subpart F.
- * RoHS compliant.



P.C.B. Hole Layout



Ordering Information

Series No.	No. of Position	No. of Contact	Keyed	Contact Plating
3714	8	8	2	1
	8	4	w/o key 2	6 μ" 1
		6		15 μ" 2
		8		30 μ" 3
				50 μ" 4
				F μ" 0