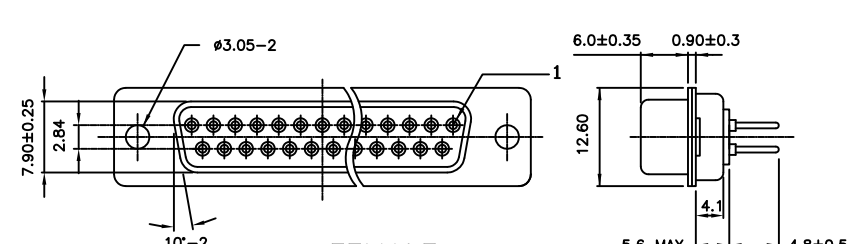
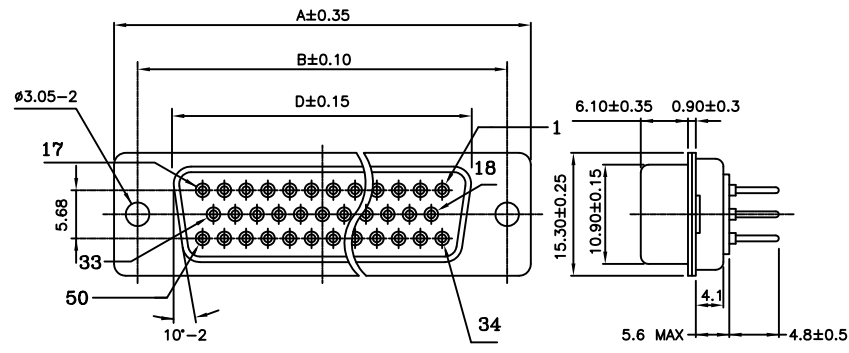


MALE



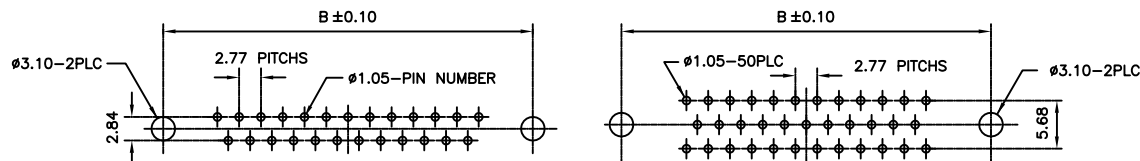
FEMALE

HOW TO ORDER :

DD - E 9 SB - X - 0 0 0
 1 2 3 4 5 6 7 8

- 1. SERIES
- 2. SHELL SIZE
 E: 9 A: 15 B: 25
 C: 37 D: 50
- 3. NO. OF CONTACTS
 9, 15, 25, 37, 50
- 4. CONTACT TYPE
 P: PIN CONTACT (PLUG), BRASS
 SB: SOCKET CONTACT (RECEPTACLE), BRASS
- 5. MOUNTING OPTIONS
- 6. CONTACT FINISH
 0: GOLD FLASH 4: 15u"
 1: SELECTIVE GOLD FLASH 6: 30u"
- 7. INSULATOR COOR
 0: BLACK 2: BLUE
 1: WHITE
- 8. SHELL PLATED
 0: TIN 1: NICKEL

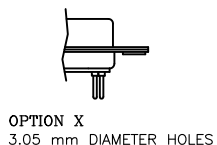
RECOMMEND PCB LAYOUT



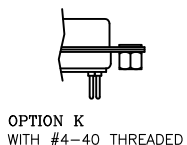
SPECIFICATION

CURRENT RATING: 5 Amps
 CONTACT RESISTANCE: 15 mOHMS MAX
 INSULATOR RESISTANCE: 1000 MOHMS MIN
 VOLTAGE: 500V AC FOR 1 MINUTE
 TEMPERATURE: -50°C TO +100°C
 INSULATOR: PBT+30% FIBRE GRASS
 UL-94-V0
 INSERTION FORCE: 350g PER PIN MAX.
 WITHDRAWEL FORCE: 25g PER PIN MIN.
 OPERATING LIFE : 200 CYCLES

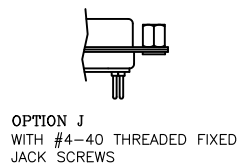
RoHS compliant



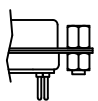
OPTION X
3.05 mm DIAMETER HOLES



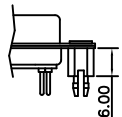
OPTION K
WITH #4-40 THREADED JACK SCREWS



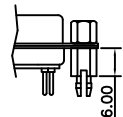
OPTION J
WITH #4-40 THREADED FIXED JACK SCREWS



OPTION KJ
WITH #4-40 THREADED RIVETED CLINCH NUTS AND JACK SCREWS ASSEMBLED TO CONNECTOR



OPTION BR
WITH #4-40 THREADED RIVETED BRACKETS



OPTION BRJ
WITH #4-40 THREADED RIVETED BRACKETS AND JACK SCREWS ASSEMBLED TO CONNECTOR

Shell Size	A	B	C	D
9	30.80	24.99	16.92	16.30
15	39.15	33.32	25.25	24.65
25	53.00	47.04	38.96	38.40
37	69.30	63.50	55.42	54.80
50	67.00	61.00	52.80	52.20

DIMENSIONS: M M	GENERAL TOLERANCE X.X ± 0.25 X.XX ± 0.15 X.XXX ± 0.05 ANGLE TOLERANCE ± 2' RADIUS ± 0.25 HOLE ± 0.13	DRAWN.	DATE	SINGATRON U.S.A.
		Joan	NOV-15-05	
CHECKED.	DATE	TITLE.		
Jack	NOV-15-05	D-SUB CONN. PCB TYPE		
C06003		APPROVED.	DATE	STRAIGHT TYPE
SCALE.	SHEET.	REV.	DRAWING NO.	PART NO.
FREE	1 OF 1	A / 0	DD series	DD-XXX-X-XXX