

1 2 3 4 5 6 7 8

F

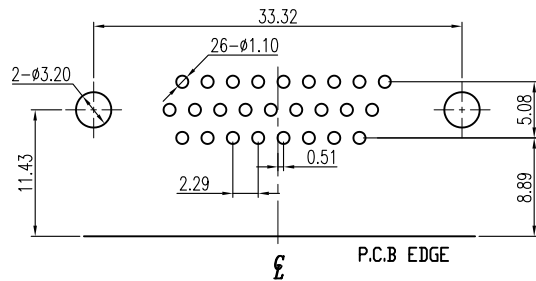
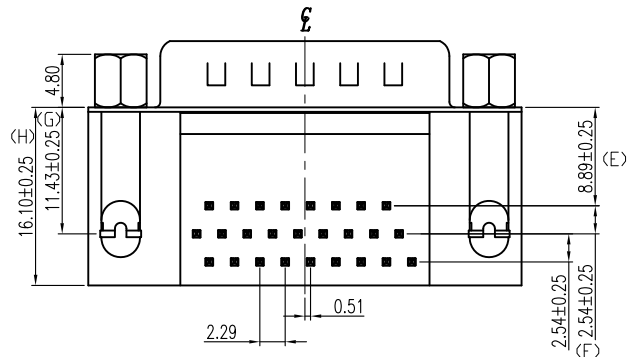
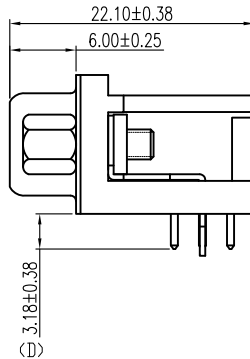
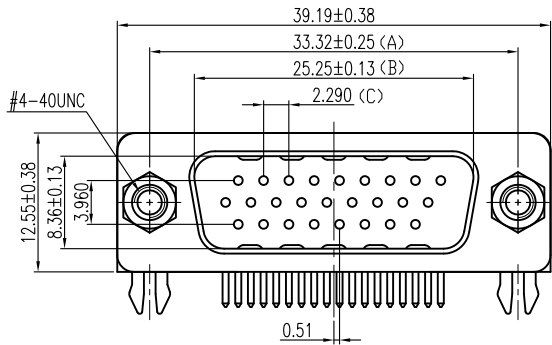
E

D

C

B

A



RECOMMENDED P.C.B LAYOUT  
INSPECTION DIMENSION:(A)~(H)

SPECIFICATIONS

1. D-SUB
- 1.1 Voltage: 250 VAC(RMS) Max.
- 1.2 Current Rating: 3 Ampere per Contact
- 1.3 Contact Resistance: 25 Milliohms Max.
- 1.4 Insulation Resistance: 5000 Megohms Min.
- 1.5 Dielectric Withstanding Voltage: 1000 VAC(RMS)
- 1.6 Total Mating Force: 9.7 Kgf Max.
- 1.7 Total Unmating Force: 1.4 Kgf Min.
- 1.8 Operating Temperature: -55°C to +85°C

NOTES

1. MATERIAL:  
Housing:PBT, UL 94V-0, Color:Black.  
Terminal:Copper Alloy.  
Shell:SPCC.  
Boardlock:Copper Alloy.  
Rivet:Copper Alloy.  
Screw:Copper Alloy.
2. FINISH:  
Terminal:Gold Plated over Nickel at Contact Area.  
Tin Plated over Nickel at Solder Ared.  
Shell:Nickel Plated.  
Boardlock:Tin Plated.  
Rivet:Nickel Plated.  
Screw:Nickel Plated.
3. This Product is LEAD-FREE & RoHS Compliance Product.

F

E

D

C

B

A

A0	An issue.	2010.11.09
REV.	CONTENTS	DATE

UNLESS OTHERWISE SPECIFIED TOLERANCE  
mm: .00 = ±0.25  
.000 = ±0.13  
Ang: 0.0 = ±2'

Singatron Enterprise Co., Ltd.				
TITLE	HIGH DENSITY D-SUB CONNECTOR 0.35"(8.89mm) FOOTPRINT,RIGHT ANGLE			
DWN	Shao Jianfeng	PART NO.	DRH-A26P-NJ-001F	
CHKD	He Wei	SCALE	1:1	UNIT: mm
APVD	Lee Jun De	SIZE: A3	SHEET: 1 OF 1	REV: A0
CUSTOMER COPY				

1 2 3 4 5 6 7 8